

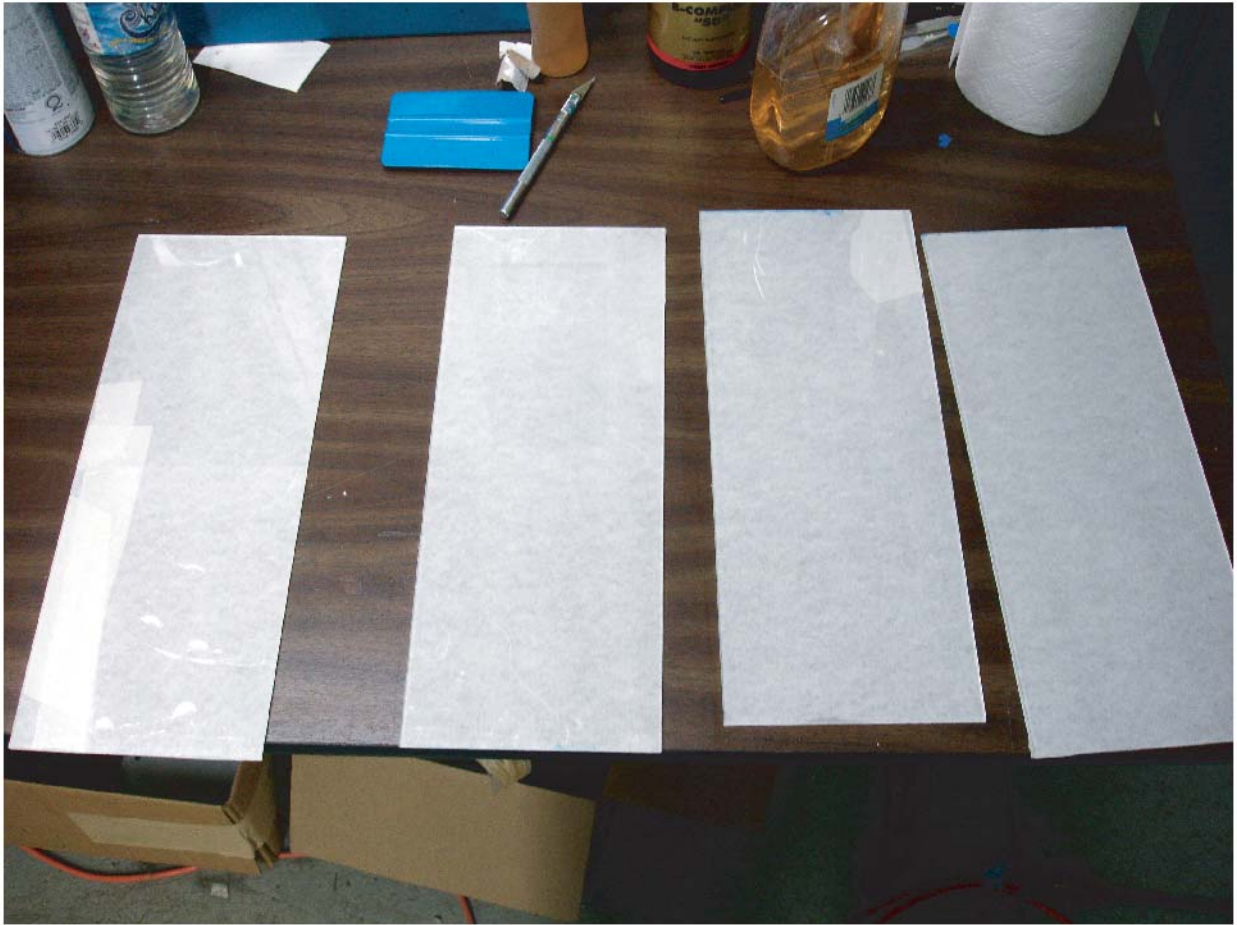
QUICK AND EASY BACKGROUNDS

OR HOW TO REVERSE PAINT A BACKGROUND



SUPPLIES

Clear Lexan/PlexiGlass Panel
Mixing Cup Stir Stick
Plastic Shopping Bag
Hair Dryer
AutoAir Hi-Lite Purple
AutoAir Iridescent Electric Blue
Auto Air Candy Brite Blue
Something To Pallet On
Black Spray Paint Gloss or Flat



STEP ONE

I buy 11"x14" Lexan panels at Home Depot. I mask both sides with application tape. I then score them and snap them in half. Remove the the mask from one side and clean well with a wax and grease remover. I prefer Rapid Prep.



STEP TWO



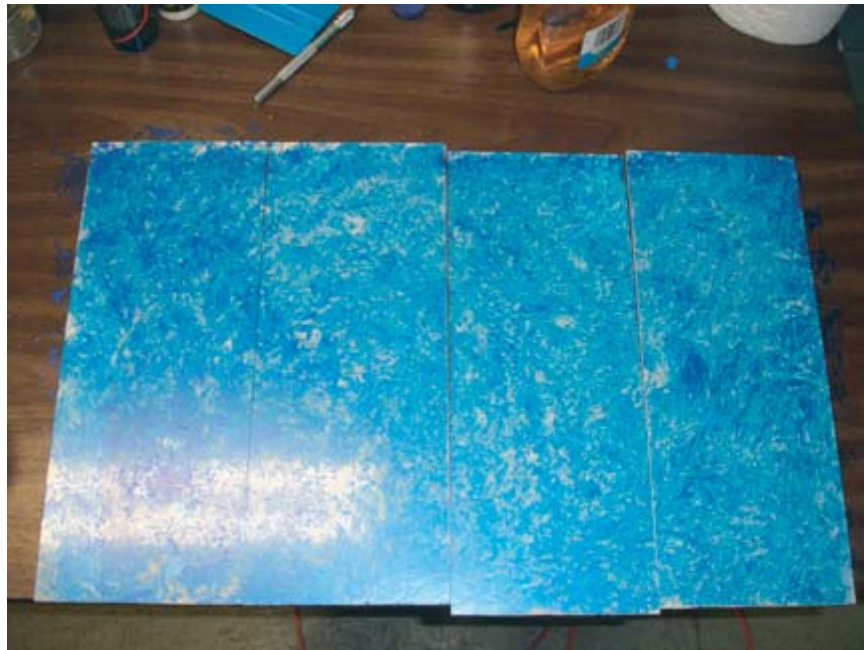
I mix the paint in a mixing cup. I use AutoAir because it can be heat set, saving time.

You can mix whatever ratios you like. My mix is mostly Iridescent Electric Blue with about 15 drops of Candy Brite Blue and 10 drops of Hi-Lite Purple. Then pour some on a pallet and smear it around.

STEP THREE



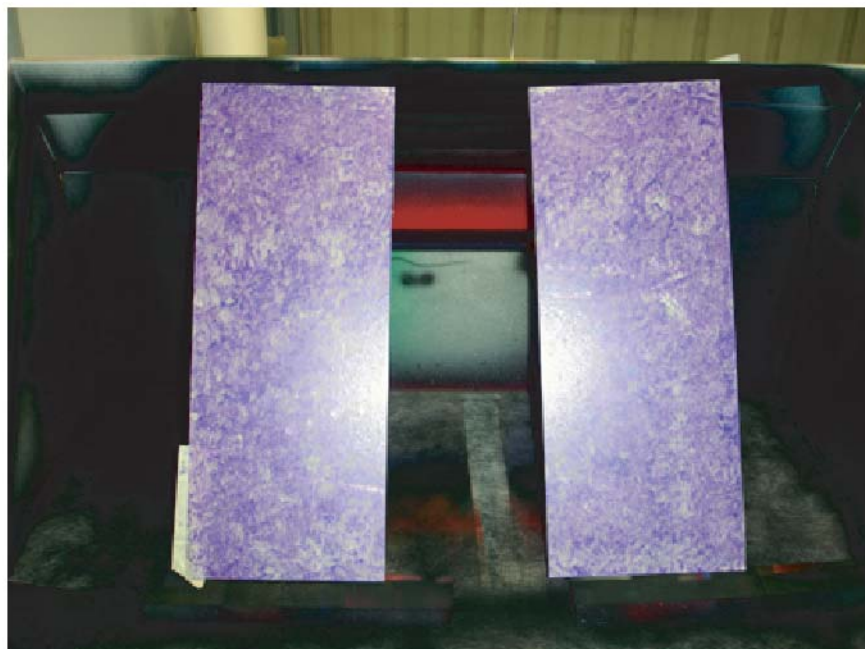
Rip a plastic shopping bag apart. Take a piece of the bag and wad it up in your hand. Dab it on your pallet and then dab it on your panel reloading when needed. Be sure not to smear the paint around. When the panels are covered to your satisfaction, take a clean piece of the bag and wad it up in your hand. Go back over the panels dabbing at the still wet paint.



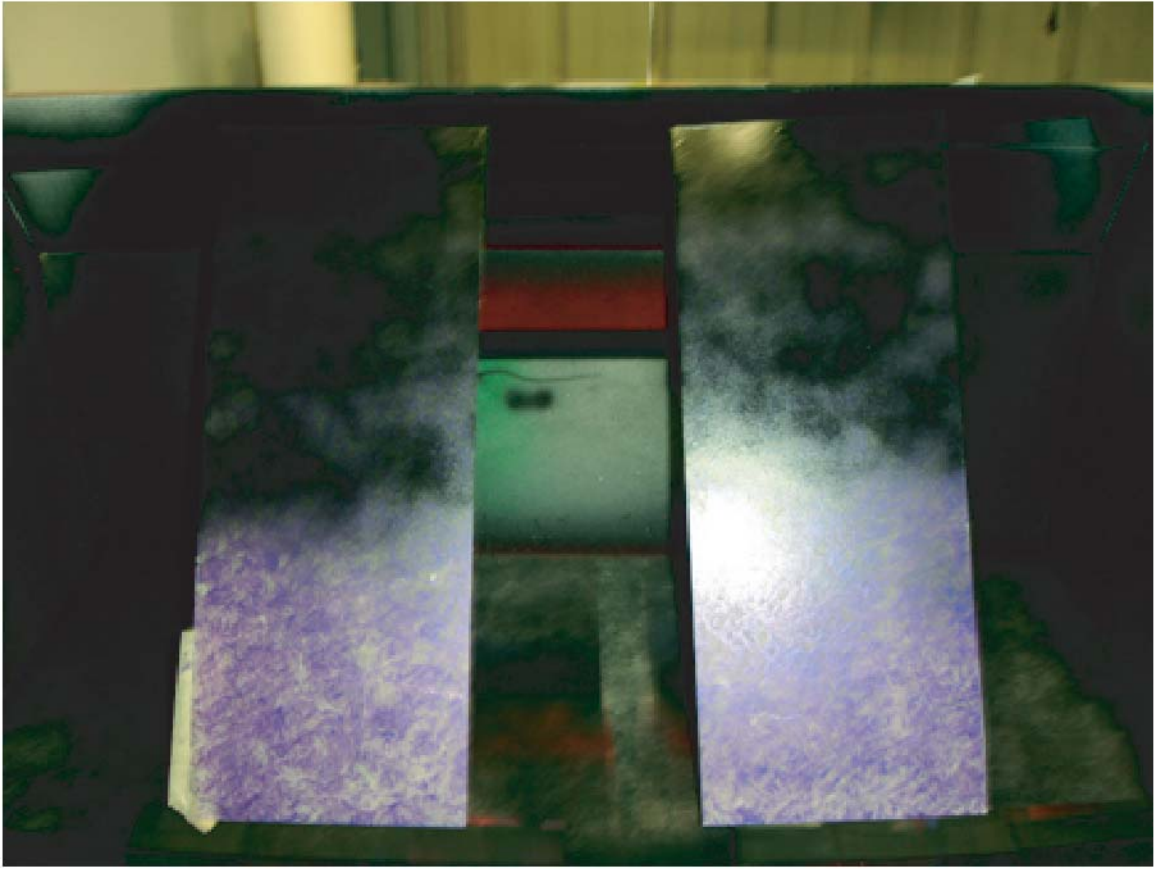
STEP FOUR



This is an important step. You must heat set the paint. Using AutoAir this way means putting it on a lot thicker than it was intended to be used. Go over the panels a number of times to be sure the paint is completely dry.



STEP FIVE



After the panels are completely dry, spray over the AutoAir paint with black rattle can paint. Do one light coat. Let dry. Follow with a second heavy/wet coat. Let dry.



STEP SIX



After the black paint is dry, remove the mask from the other side of the panel. You'll see a slightly marbled looking glossy panel ready to paint on.



EXAMPLES



EXAMPLE